

# Sample Work-flow for WBJEE 2020 Counselling Process (1<sup>st</sup> Cycle)



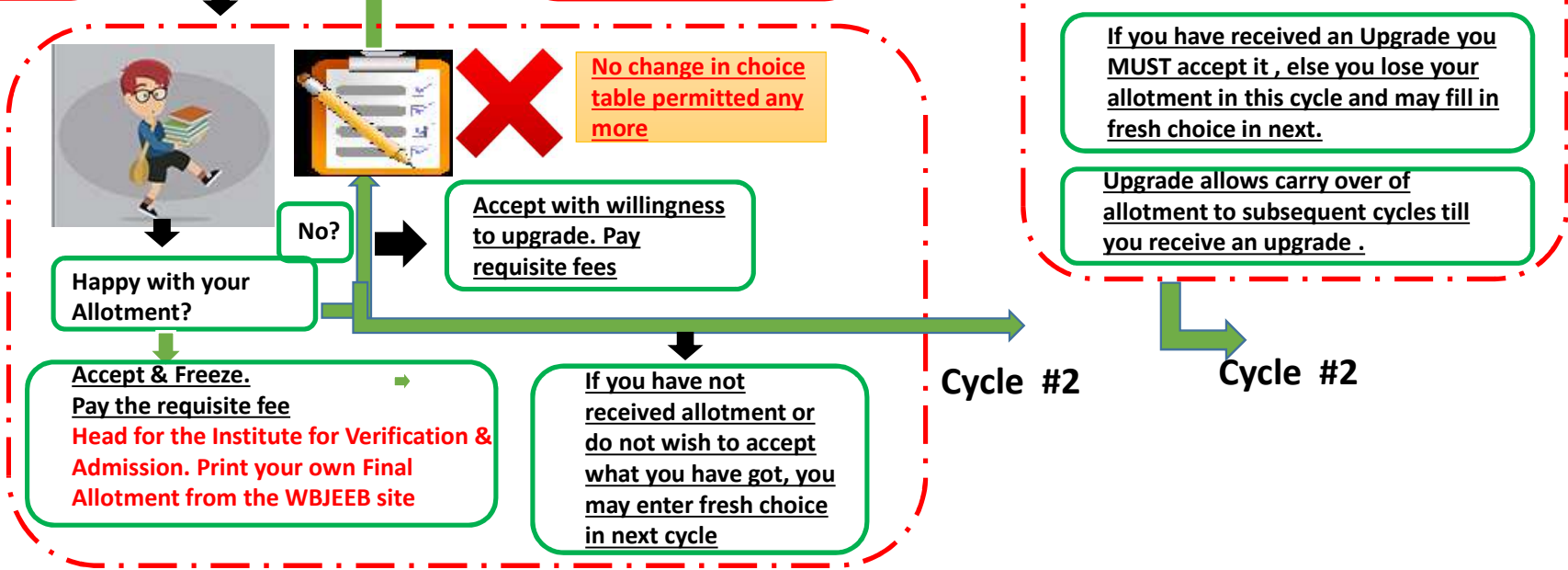
**Free of Cost** বিনামূল্যে নি:শুল্ক  
**For WBJEE Rank Holders** 1<sup>st</sup> Cycle

**Registration Compulsory for any Admission**

**Initial Allotment**

**Inter-Cycle Allotment**

Block #1



Register your choice Online with at least 20 choices. Upload Documents Lock choice



Resolve queries related to documents

Cycle #2

Cycle #2

## Sample Work-flow for WBJEE 2020 Counselling Process (Important Points)

There will be a separate counselling for JEE(Mains) candidates & those who require NATA score for architecture



Register & Create a Profile

Note Very Carefully

Visit [www.wbjeeb.in](http://www.wbjeeb.in) for Details and notifications

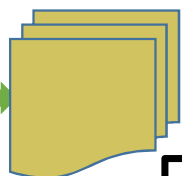


Received an Allotment/Upgrade



Happy with Allotment

Upload relevant documents as scanned copies of original. If you do not have a computer & scanner visit our Common Service Centers .PDFs only



নি:শুল্ক  
বিনামূল্যে

Free of Cost

Fill up at least 20 choices . Remember you must get an allotment to qualify for upgrade within a cycle.



Be cautious about filling up choices Your choice table must be supported by you documents.



Do not forget to lock your choice. Remember, NO locking means NO Allotment. There is NO auto locking this time.

Each time you receive an Allotment, you MUST Accept with requisite Payment/adjustment even if you want an UPGRADE

An UPGRADE is IRREVERSIBLE. You cannot get your old allotment back

You may continue to UPGRADE till the last Cycle if you wish but NO change in Choice Table

Use the Accept and Freeze option and download the Final Allotment Letter This is provisional to Original Document Verification & other formalities at the allotted institute

Contact the Allotted Institute & Complete Admission Formalities

If you have downloaded the Final Allotment letter, Withdrawal through the portal is possible within the same cycle only.

# Sample Work-flow for WBJEE 2020 Counselling Process (2<sup>nd</sup> Cycle)

